

# YTOT

## CCTV·LENS

2018·12



## 目录

# 1 Vari-focal Lenses page 3

ZOOM      ★ 2.7-10mm  
★ 2.7-13.5mm      3.6-11mm  
★ 6-22mm      5-50mm  
CS

# 2 Fixed Focal Lenses page 11

★ Super Starlight F1.0      ★ Starlight F1.6      ★ 4K  
2.8mm      4mm      6mm      8mm  
Small size      1/4"      Fish-eye

01

# Vari-focal Lenses

ZOOM

3.6-11mm



2.7-10mm



6-22mm



2.7-13.5mm

5-50mm

CS

ZOOM

2.7-10mm ★

2.7-13.5mm ★

3.6-11mm

6-22mm ★

5-50mm

CS



## YT50002

- 33X zoom lens
- F 1.4
- 4.5-148.5mm
- 1/2.7" 61.9°-2.4°
- 1/2.8" 60.1°-2.3°
- 1/2.9" 58.5°-2.2°
- 1/3" 53.1°-2°
- 2MP/4MP



## YT50003

- 4X zoom lens
- F 1.5
- 3.6-11mm
- 1/1.8" 106.8°-44.2°
- 3MP/6MP/8MP

4K



## YT50005

- 5X zoom lens
- F 1.3
- 2.7-13.5mm
- 1/2.7" 118.2°-31.7°
- 1/2.8" 113.1°-30.6°
- 1/2.9" 108.2°-29.6°
- 1/3" 94.22°-26.4°
- 2MP/4MP/6MP



## YT50006

- 5X zoom lens
- F 1.3
- 2.7-13.5mm
- 1/2.7" 118.1°-29.8°
- 1/2.8" 113.1°-28.8°
- 1/2.9" 108.18°-27.8°
- 1/3" 94.4°-24.8°
- 2MP/4MP/6MP

NEW



YT50010

- 3X zoom lens
- F 1.2
- 3.6-11mm
- 1/1.8" 112.0°-47.2°
- 2MP/4MP/8MP

4K

NEW



YT50011

- 4X zoom lens
- F 1.3
- 8-32mm
- 1/1.8" 42.1°-14.8°
- 2MP/4MP/8MP

4K

ZOOM

2.7-10mm

2.7-13.5mm ★

3.6-11mm

6-22mm ★

5-50mm

CS

# YT30022

+ Holder + ICR

FB.IR-JZ DB.IR-JZ

- F1.2
- 2.7-10mm
- Mount  $\Phi 16$
- 1/2.7" 114.7°-36.7°
- 1/2.8" 109.9°-35.5°
- 1/2.9" 105.3°-34.3°
- 2MP/4MP/6MP



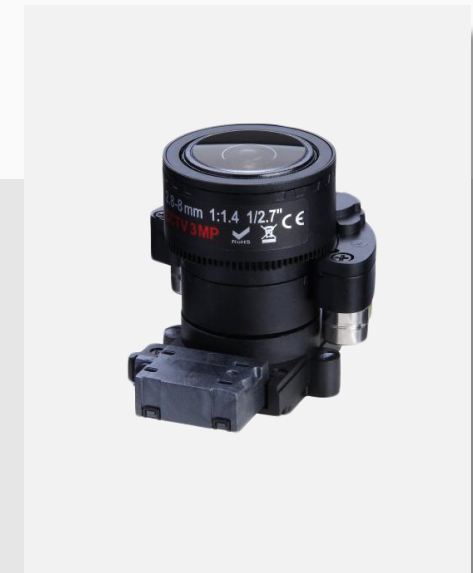
*NEW*

# YT3005

+ Holder + ICR

Motorized zoom

- F 1.4
- 2.8-8mm
- Mount  $\Phi 14$
- 1/2.7" 106.6°-51.8°
- 1/3" 95°-47.2°
- 3MP/5MP



ZOOM

2.7-10mm ★

2.7-13.5mm

3.6-11mm

6-22mm ★

5-50mm

CS



## YT3013

FB.IR (-JZ) FB.ICR (-JZ)  
DB.IR (-JZ) DB.ICR (-JZ)

- F 1.3
- 2.7-12mm
- Mount Φ14
- 1/2.7" 113.5°-33.4°
- 1/2.9 " 104.2°-31.2°
- 1/3" 91.2°-27.8°
- 2MP/4MP/6MP



## YT3015

FB.IR (-JZ)

- F 1.3
- 2.7-13.5mm
- Mount Φ14
- 1/2.7" 113.5 °-29.7°
- 1/2.9 " 104.2°-27.8°
- 1/3" 91.2°-24.8°
- 2MP/4MP/6MP



## YT3018

FB.IR (-JZ) FB.ICR (-JZ)  
DB.IR (-JZ) DB.ICR (-JZ)

- F 1.4
- 2.8-12mm
- Mount Φ14
- 1/2.7" 105.9°-33.4°
- 1/2.9 " 97.6°-31.2°
- 1/3" 85.6°-27.8°
- 2MP/4MP/6MP



## YT3019

FB.IR

- F 1.3
- 2.8-13.5mm
- Mount Φ14
- 1/2.7" 105.9°-29.7°
- 1/2.9 " 97.6°-27.8°
- 1/3" 85.6°-24.8°
- 2MP/4MP/6MP

ZOOM

2.7-10mm ★

2.7-13.5mm ★

3.6-11mm

6-22mm ★

5-50mm

CS



4K

## YT3010

FB.IR (-JZ)    FB.ICR (-JZ)  
 DB.IR (-JZ)    DB.ICR (-JZ)

- F 1.5
- 3.6-11mm
- Mount  $\Phi$ 14
- 1/1.8"    112.5°-46.6°
- 1/2.5 "    85.6°-  
37.8°
- 3MP/6MP/8MP



ZOOM

2.7-10mm ★

2.7-13.5mm ★

3.6-11mm

6-22mm

5-50mm

CS



*NEW 4K*

# YT30021

FB.IR-JZ DB.IR-JZ

- F1.6
- 6-22mm
- Mount  $\Phi$ 14
- 1/2.5" 45.4°-18.2°
- 1/2.7 " 41.4°-16.6°
- 3MP/5MP/8MP-15.2°
- 3MP/5MP/8MP

ZOOM

2.7-10mm ★

2.7-13.5mm ★

3.6-11mm

6-22mm ★

5-50mm

CS



# YT3017

FB.IR (-JZ) DB.IR (-JZ)

- 10X zoom lenses
- F 1.6
- 5-50mm
- Mount  $\Phi$ 14
- 1/2.7" 50.9°-7.6°
- 1/3" 41.8°-6.4°
- 1/4" 33.1°-5.1°
- 2MP/4MP

ZOOM

2.7-10mm ★

2.7-13.5mm ★

3.6-11mm

6-22mm ★

5-50mm

CS



## YT3011CS

- F 1.5
- 3.6-11mm
- Mount CS
- 1/1.8" 112.5°-46.6°
- 1/2.5 " 85.6°-37.8°
- 3MP/6MP/8MP

4K



## YT3017CS

10X zoom lenses

- F 1.6
- 5-50mm
- Mount CS
- 1/2.7" 50.9°-7.6°
- 1/3" 41.8°-6.4°
- 1/4" 33.1°-5.1°
- 2MP/4MP



## YT3016CS

5X zoom lenses

- F 1.6
- 2.7-13.5mm
- Mount CS
- 1/2.7" 113.5°-31.7°
- 1/2.9 " 104.2°-29.6°
- 1/3" 91.2°-26.4°
- 2MP/4MP/6MP

02

# Fixed Focal Lenses

★ Super Starlight F1.0

2.8mm

4mm

★ Starlight F1.6

6mm

8mm

★ 4K

Small size

1/4"

Fish-eye

Super Starlight

Starlight ★

4K ★

2.8mm

4mm

6mm

8mm

Small size

1/4 "

Fish-eye



YT10043

Filter / ICR / AF holder

- F0.95
- 4mm
- Mount M16
- 1/2.7" 92.3°
- 1/2.8" 88.4°
- 1/2.9" 84.8°
- 2MP



YT10031

Filter / ICR / AF holder

- F0.98
- 6mm
- Mount M16
- 1/2.7" 55.7°
- 1/2.8" 53.8°
- 1/2.9" 52°
- 2MP

NEW



YT10055

Filter / ICR

- F1.0
- 4mm ( 等效 )
- Mount M16
- 1/1.8" 86.6°
- 2MP/4MP

NEW



YT10056

Filter / ICR

- F1.0
- 6mm ( 等效 )
- Mount M16
- 1/1.8" 53°
- 2MP/4MP

Super Starlight★

Starlight

4K★

2.8mm

4mm

6mm

8mm

Small size

1/4 "

Fish-eye



## YT10040

+ Holder + ICR

- F1.6
- 2.8mm
- Mount M12
- 1/2.5" 110.2°
- 1/2.7" 111.6°
- 1/2.8" 107°
- 2MP/4MP/6MP

## YT10036

+ Holder + ICR

- F1.6
- 4mm
- Mount M12
- 1/2.7" 90.9°
- 1/2.8" 87.6°
- 1/2.9" 84.2°
- 2MP/4MP/6MP

## YT10042

+ Holder + ICR

- F1.6
- 6mm
- Mount M12
- 1/2.7" 56°
- 1/2.8" 54.3°
- 1/2.9" 52.4°
- 2MP/4MP/6MP

## YT10045

+ Holder + ICR

- F1.6
- 8mm
- Mount M12
- 1/2.7" 42.6°
- 1/2.8" 41.4°
- 1/2.9" 40.2°
- 2MP/4MP/6MP

Super Starlight ★

Starlight ★

4K

2.8mm

4mm

6mm

8mm

Small size

1/4 "

Fish-eye



## YT10039

Filter / ICR / AF

- F 1.6
- 2.8mm (等效 equivalent)
- Mount M16
- 1/1.8" 110.8° IMX334
- 1/2.5" 88° IMX274
- 8MP

# 4K



## YT10035

Filter / ICR / AF

- F 1.6
- 4mm (等效 equivalent)
- Mount M16
- 1/1.8" 87° IMX334
- 1/2.5" 69° IMX274
- 8MP

# 4K



## YT10047

Filter / ICR / AF

- F 1.6
- 6mm (等效 equivalent)
- Mount M16
- 1/1.8" 55° IMX334
- 1/2.5" 44° IMX274
- 8MP

# 4K



YT10039 / YT10035 / YT10047

## AF HOLDER

Super Starlight ★

Starlight ★

4K ★

2.8mm

4mm

6mm

8mm

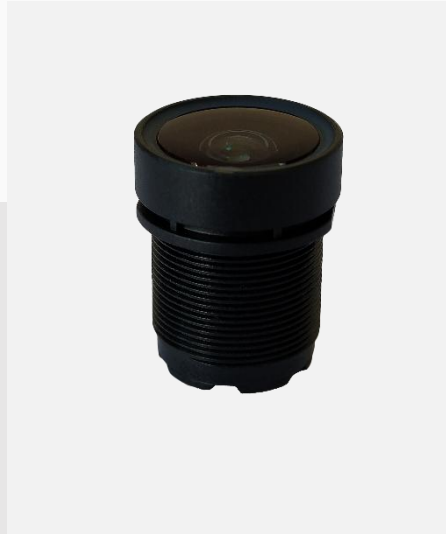
Small size

1/4"

Fish-eye

# YT10046

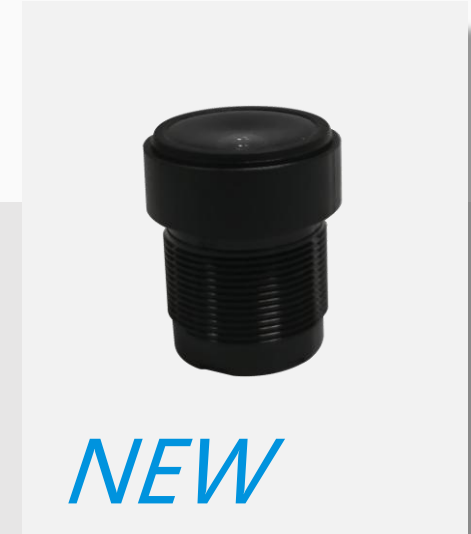
+ Holder + ICR



- F 2.0
- 2.8mm
- Mount M12
- 1/2.7" 118.4°
- 1/2.8" 113.8°
- 1/2.9" 109.2°
- MP/2MP/4MP

# YT10066

+ Holder + ICR



NEW

- F 2.05
- 2.8mm
- Mount M12
- 1/2.7" 105.4°
- 1/2.8" 101.3°
- 1/2.9" 97.4°
- 2MP/4MP/6MP



Super Starlight ★

Starlight ★

4K ★

2.8mm

4mm

6mm

8mm

Small size

1/4 "

Fish-eye



## YT10037

+ Holder + ICR

- F 2.4
- 3.6mm
- Mount M12
- 1/2.7" 95.8°
- 1/2.8" 91.4°
- 1/2.9" 87.3°
- MP/2MP



## YT10137

+ Holder + ICR

- F 2.4
- 3.8mm
- Mount M12
- 1/2.7" 92.2°
- 1/2.8" 88.1°
- 1/2.9" 84.3°
- MP/2MP



## YT10050

+ Holder + ICR

- F 2.0
- 4mm
- Mount M12
- 1/2.7" 87.4°
- 1/3" 73°
- 1/4" 56°
- 2MP/4MP/6MP

Super Starlight ★

Starlight ★

4K ★

2.8mm

4mm

6mm

8mm

Small size

1/4 "

Fish-eye



## YT1028

+ Holder + ICR

- F 2.0
- 6mm
- Mount M12
- 1/2.7"      54.4°
- 1/2.8"      52.8°
- 1/2.9"      50.9°
- 2MP/4MP/6MP

Super Starlight ★

Starlight ★

4K ★

2.8mm

4mm

6mm

8mm

Small size

1/4 "

Fish-eye



## YT10051

+ Holder + ICR

- F 2.0
- 8mm
- Mount M12
- 1/2.7"     41.3°
- 1/2.8"     39.9°
- 1/2.9"     38.5°
- 2MP/4MP/6MP

Super Starlight ★

Starlight ★

4K ★

2.8mm

4mm

6mm

8mm

Small size

1/4 "

Fish-eye



## YT1021

+ Holder + ICR

- F 2.2
- 2.8mm
- Mount M12
- 1/2.8" 117.8°
- 1/2.9" 113°
- 1/3" 99.5°
- 1/4" 78.8
- MP/2MP



## YT10038

+ Holder + ICR

- F 2.1
- 2.1mm
- Mount M12
- 1/2.9" 141.2°
- 1/3" 137.4°
- 1/4" 104°
- MP/2MP/4MP

Super Starlight ★

Starlight ★

4K ★

2.8mm

4mm

6mm

8mm

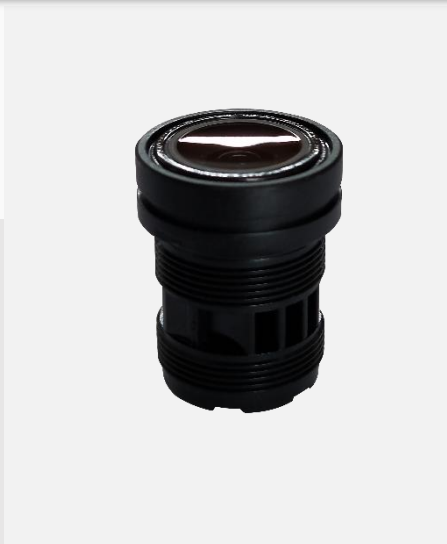
Small size

1/4 "

Fish-eye

## YT10052

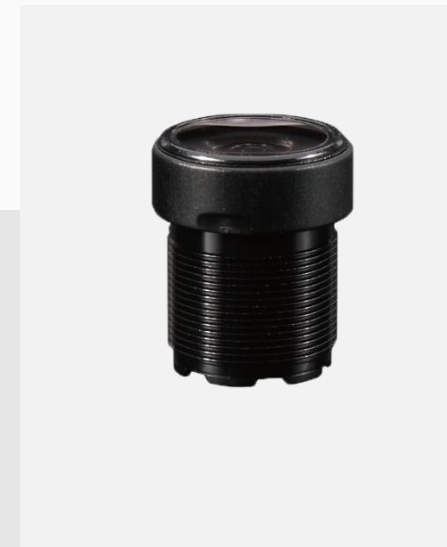
+ Holder + ICR



- F 2.2
- 3.2mm
- Mount M12
- 1/4" 72.6°
- MP

## YT1017

+ Holder + ICR



- F 2.35
- 2.5mm
- Mount M12
- 1/4" 91.9°
- MP

Super Starlight ★

Starlight ★

4K ★

2.8mm

4mm

6mm

8mm

Small size

1/4 "

Fish-eye



## YT7001

- F 1.8
- 1.5mm
- Mount M12
- $\Phi 4.2$  190°
- 8MP



## YT7002

- F 2.0
- 1.1mm
- Mount M12
- $\Phi 3.2$  180°
- 4MP



## YT70005

- F 2.1
- 0.98mm
- Mount M12
- $\Phi 3.0$  200°
- 2MP

# THANK YOU

**Dongguan Yutong Optical Technology Co.,Ltd**



**86-769-89266655**



**Http : //www.ytot.cn**